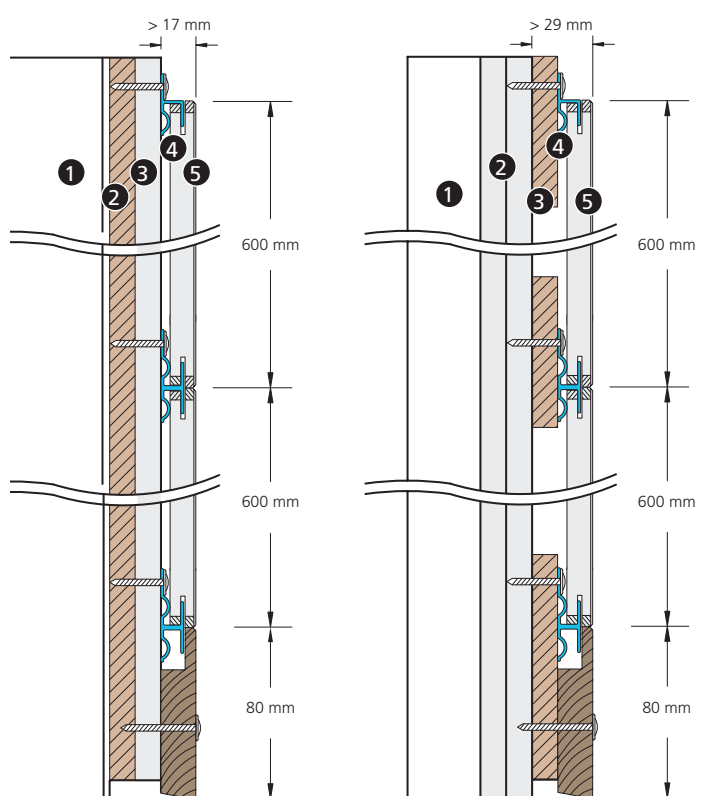


SYSTEME DE MONTAGE AU MUR

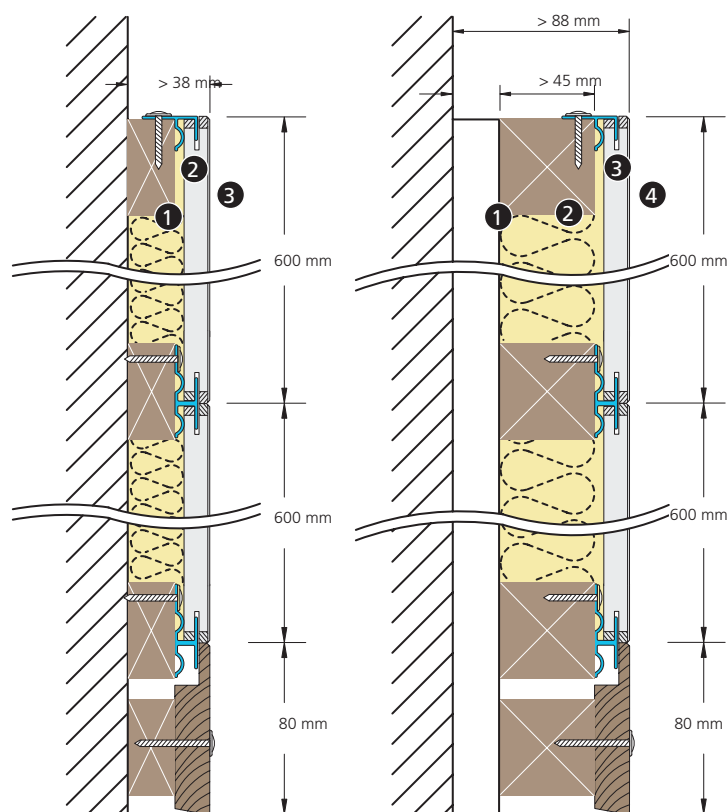
INSTALLATION DIRECTEMENT SUR LE MUR



- 1 Montant métallique
- 2 Contreplaqué 12 mm
- 3 Plaque de Gypse 12 mm
- 4 Profilé Capax
- 5 Panneau Gustafs

- 1 Montant métallique
- 2 Plaques de gypse 2x12 mm
- 3 Lames de contreplaqué 12 mm
- 4 Profilé Capax
- 5 Panneau Gustafs

INSTALLATION AVEC SECTION ACOUSTIQUE

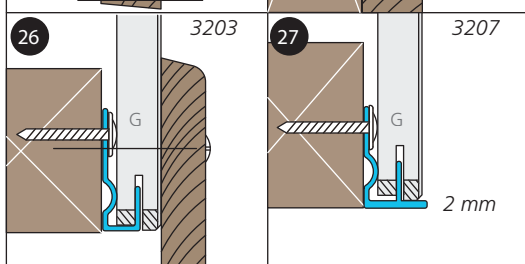
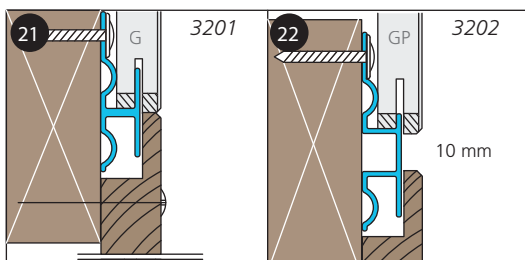
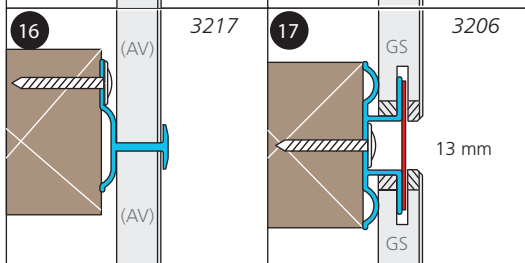
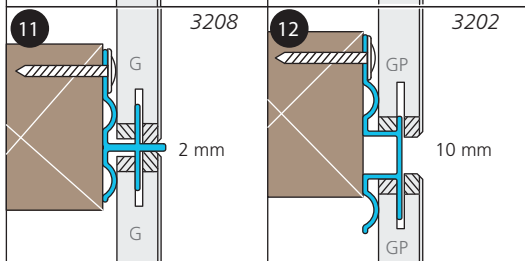
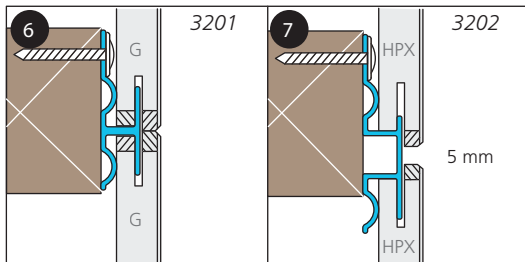
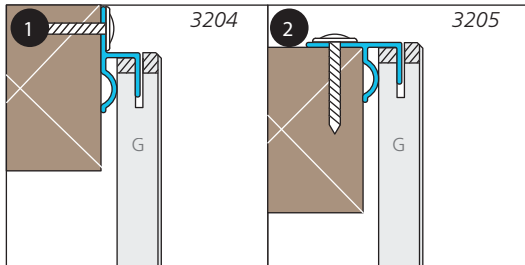


- 1 Montants et isolation
- 2 Profilé Capax
- 3 Panneau Gustafs

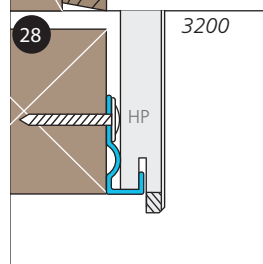
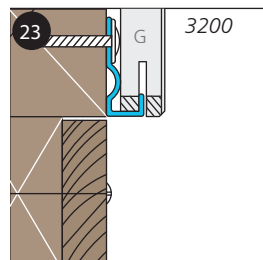
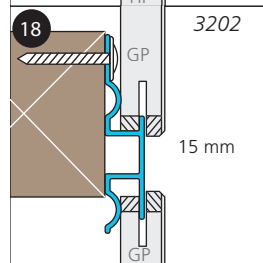
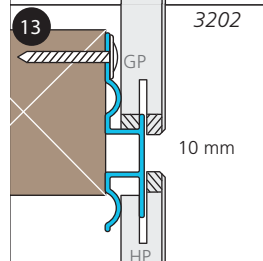
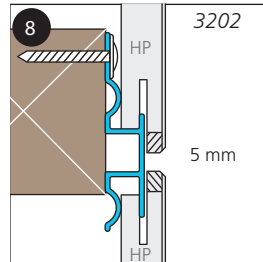
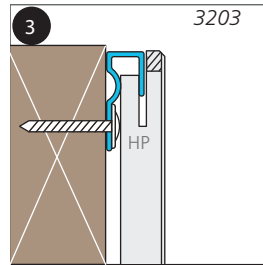
- 1 Montants et vide d'air
- 2 Montants et isolation
- 3 Profilé Capax
- 4 Panneau Gustafs

MONTAGE AU MUR - DES SOLUTIONS A LA CARTE

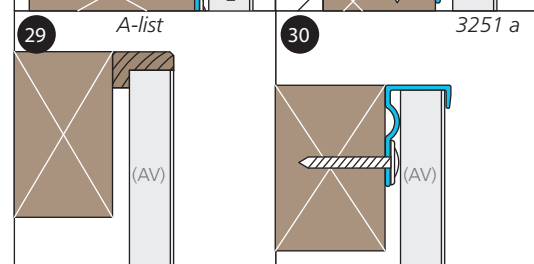
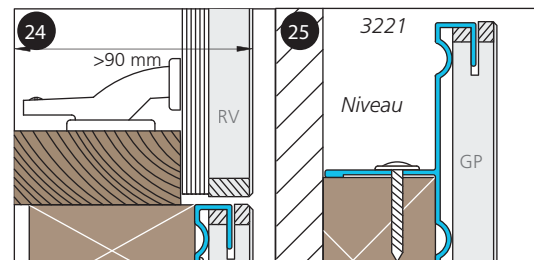
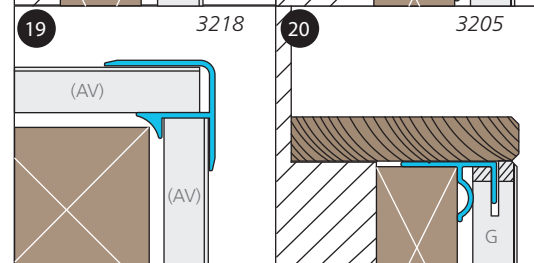
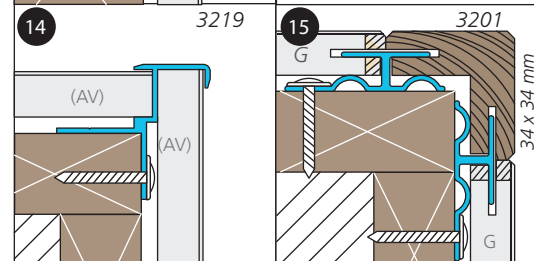
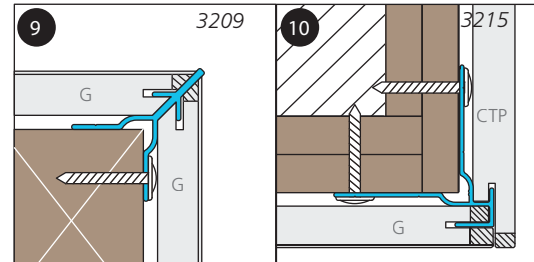
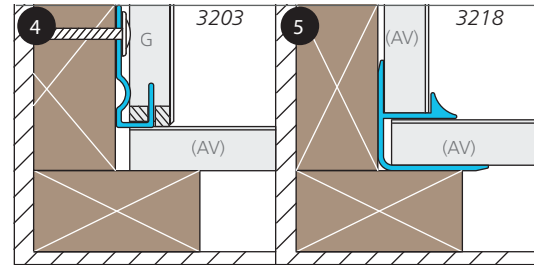
PANNEAUX FIXES



PANNEAUX DEMONTABLES



COINS ET BORDS



Bords = G, GP GF, GS, HP, HPX, RV, AV.

⊗ Numéro du choix de montage pour la commande